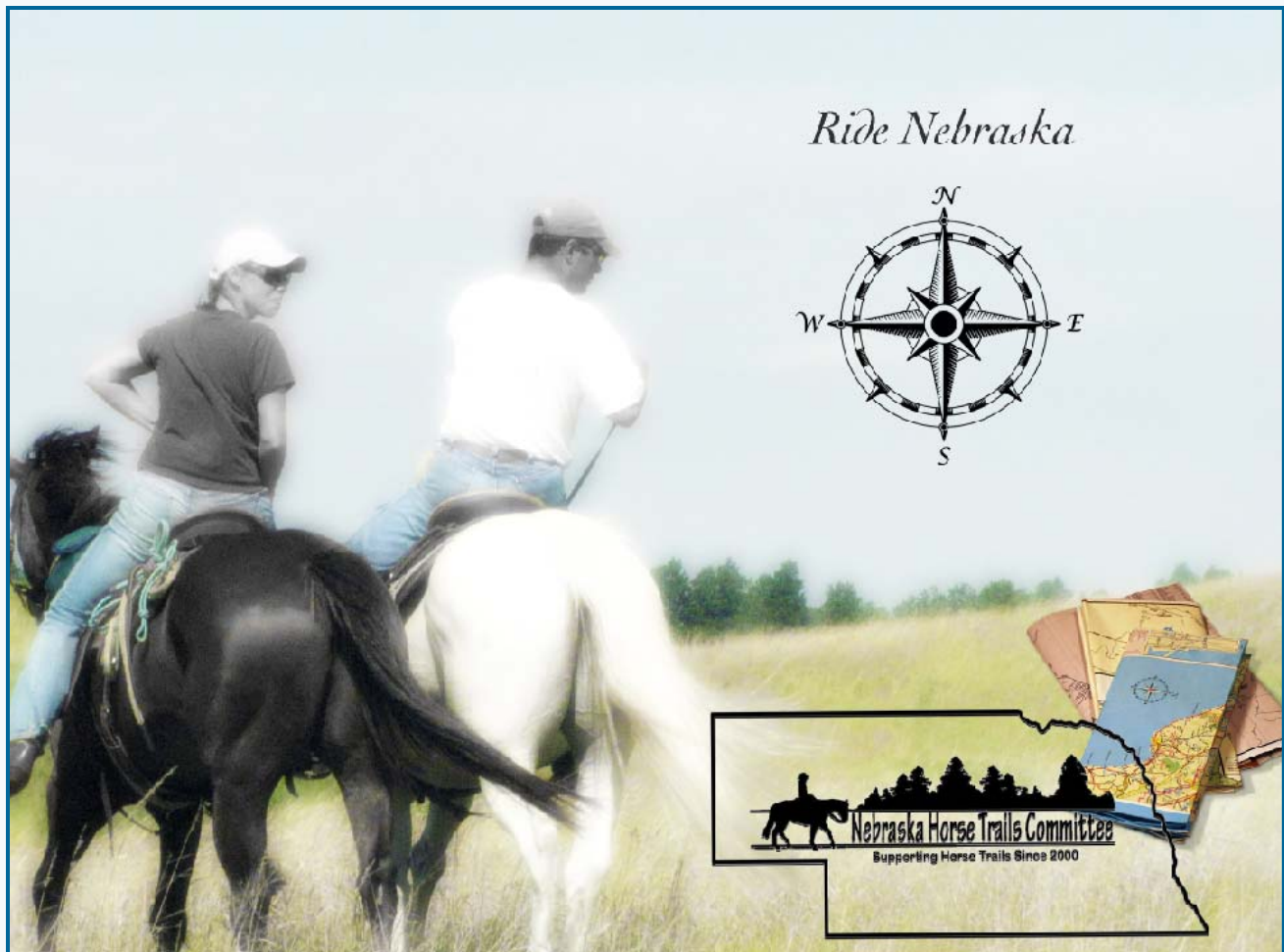


A GUIDE FOR

Nebraska Horse Trails

First Edition | January 2018

Ride with a Smile, A Light Hand & Gently on the Land



Written and compiled by Tammy Vasa on behalf of the Nebraska Horse Trails Committee

About this Publication



Since the beginning of this millennium, I have been riding, writing about and promoting the horse trails of Nebraska through the Nebraska Horse Trails Committee and my own website, Horsetrailriders.com. More than just a fly-over state, Nebraska is rich in history; the Pony Express, the Oregon and Mormon Trails, the Lewis and Clark expedition and home to many Native American tribes. It is not all amber waves of grain in the 37th largest state. Discover the Sandhills in north-central Nebraska and the Pine Ridge regions in the western part of our state. Climb the bluffs along the Missouri River and view the variegated fall colors. Ride through the country's only man-made forest or you can literally follow the tracks of the covered wagons passing through our state. Get off the interstate and into the saddle to see what Nebraska is really made of!

This booklet has been years in the making. While it may seem like an easy project capturing all the trails in Nebraska, the Nebraska Horse Trails Committee wanted to provide more than just the name and location. Every time one of us would delve into the project, it became apparent that more research was necessary and perhaps we should ride the trails first and then report on them! We all agreed riding was much more fun. Trail photos and those taken at NHTC sponsored events are also included in this publication. Our accompanying website, nehorsetrails.com, will have video from some of our favorite places.

Our active members and volunteers are what keeps many horse trails open. If you live in Nebraska and enjoy horses or horse trails, I would encourage you to spend some time volunteering at our parks and experience that sense of pride and accomplishment when you have helped preserve, improve and even create horse trails.

Over the last seventeen years I have been fortunate to ride many of the places in this book. For those I didn't visit, I either relied on information from others or researched online to include in this publication. Information might change so please apply proper due diligence before traveling. If in question, call before you haul. If you find changes or errors or have Nebraska trails to add, please visit our website at nehorsetrails.com and leave a message with the correction or information.



A special thanks to Diane Beckham, Sherry Reeble and Shari Parys for proofreading this booklet and to the many, many folks I called upon for information, clarification and/or pictures.

On behalf of the Nebraska Horse Trails Committee, we invite you to Trail Ride Nebraska!

Happy Trails,

Tammy Vasa

Trail Ride Nebraska!



The Nebraska Horse Trails Committee has compiled this booklet with information on horse trail riding and camping in Nebraska. You will enjoy Nebraska's diverse landscape rich in military, western and Native American history. From the buttes above Fort Robinson to the Salt Valley Lakes of eastern Nebraska, you haven't toured Nebraska until you have seen it from the back of your horse.

Recognizing a need for an organized group to work with park managers and develop horse trails on public land, **The Nebraska Horse Trails Committee** was formed in the year 2000 by avid trail riders. Not just talk, this group is action! Now a 501(c)(3) non-profit organization, the NHTC is responsible for clearing trails, negotiating new trails and improvements on the trail, at trailheads and horse campgrounds.



The **Horse Trail Riding Expo** held each year in March provides educational opportunities for all trail riders and is the group's largest fundraiser. In addition to Expo, donations from individuals and corporations help provide funding for our Nebraska projects. Many hours of sweat and a lot of heart has gone into the trails projects for all horse lovers to enjoy. We invite you to join us on our Mission.

OUR MISSION STATEMENT

- ◇ To preserve and maintain horse trails and natural resources in Nebraska to be enjoyed today and for future generations
- ◇ To conserve and promote enjoyment of horse trail use throughout Nebraska's diverse and scenic landscape
- ◇ To create opportunities for the education and cooperation of all trail users and land owners regarding the issues of involving horses in the natural environment



Manpower is also needed for many of our projects. If you would like to help clear trails, volunteer for some of our events or just attend our planning meetings, we encourage you to visit our website at nehorsetrails.com and provide your contact information.

Many hands make light work and more hands are always welcome!

Table of Contents



Chapter 1 Western Nebraska - West of Valentine & Hwy 836

[] Fort Robinson - Crawford.....	6—7
[] Lake McConaughy - Ogallala	8
[] Outrider Trailhead - Chadron.....	9
[] The Pine Ridge Trail / Roberts Tract Trailhead - Chadron.....	10
[] Sam McKelvie National Forest / Steer Creek Campground - Valentine.....	11
[] Soldier Creek Wilderness Campground - Crawford.....	12

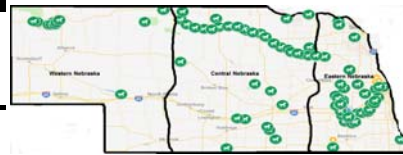
Chapter 2 Central Nebraska - East of Valentine to Hwy 81 13

[] Bader Park - Chapman	13
[] Bassway Strip - Gibbon	14
[] Big Canyon Inn - Springview	15
[] The Cowboy Trail - Valentine to Norfolk	16
[] Cottonmill Park - Kearney	17
[] Crystal Lake - Ayr	17
[] Davis Creek - Loup City	18
[] Liberty Cove - Lawrence	18
[] Loup Junction - St. Paul	18
[] Nebraska National Forest - Halsey.....	19
[] Niobrara River Ranch - Valentine	20
[] Niobrara State Park - Niobrara.....	21
[] Peckerneck Trail - Alma	22
[] Prairie Lake - Hastings	23
[] Pressey Park - Oconto.....	23
[] South Shore/Lewis & Clark - Crofton	24
[] Willow Creek - Pierce	25

Chapter 3 Eastern Nebraska - East of Hwy 81 to NE/IA State Line26

[] NHTC Trail Challenge	26
[] Bluestem Lake - Martell	27

Table of Contents



[] Buckskin Hills - Newcastle	27
[] Branched Oak - Raymond	28-29
[] Camp Moses Merrill - Linwood	30
[] Cunningham Lake - Omaha.....	31
[] Conestoga Lake - Denton.....	32
[] Czechland Lake - Prague	32
[] Danish Alps - Hubbard.....	33
[] Indian Cave - Shubert.....	34
[] Dead Timber / Powderhorn - Scribner.....	35
[] Hormel Park - Fremont	35
[] Maskenthine Lake - Stanton.....	35
[] MoPac - Lincoln, Eagle, Elmwood, Wabash, Springfield, Louisville.....	36
[] NP Dodge Park - Omaha.....	37
[] Oak Glen - Garland.....	37
[] Oak Creek Trail - Valparaiso, Loma, Brainard.....	38
[] Pawnee Lake - Lincoln (Emerald)	39
[] Rock Creek Station - Fairbury	40
[] Pioneers Park - Lincoln	41
[] Stagecoach Lake - Hickman.....	41
[] Standing Bear Lake - Omaha.....	41
[] Turkey Creek Ranch - Newcastle	42
[] Two Rivers - Waterloo	43
[] Wagon Train - Hickman	44
[] Walnut Creek - Omaha (Papillion)	44
[] Wilderness Park - Lincoln	45
[] Wildwood Lake - Agnew	45
[] Resources / Board of Directors	46
[] The Horse Trail Riding Expo.....	47

Fort Robinson Crawford

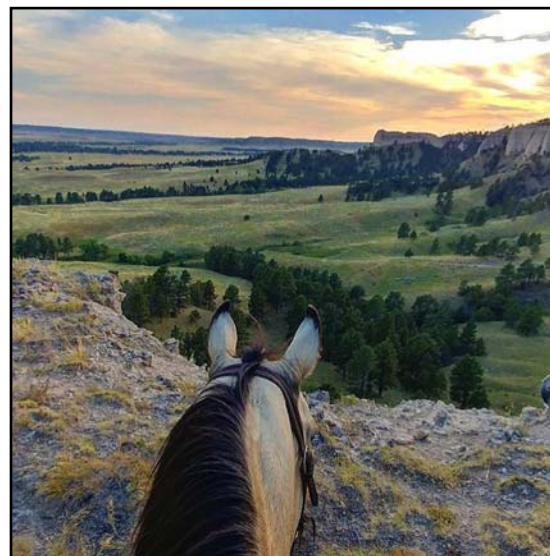


If asked where to ride in Nebraska, Fort Robinson is the place most people mention. Located in northwestern Nebraska, it is more than a stopover to the Black Hills—it is its own destination. Rich in military history, you will take a step back in time staying right on the outpost and stable your horses in the historic barns where thousands of horses passed through this Army remount depot. Bring your whole family on this horse vacation.

Witness the Fort's history from its 1874 role guarding the Red Cloud Agency through the World War II German Prisoner of War Camp. You will find the monument representing the death of the famed Sioux Chief Crazy Horse and visit more than a dozen historic structures and sites such as the blacksmith shop, veterinary hospital, guardhouse and the old post cemetery. Stop in the museum, swim at the indoor pool or go for a jeep or wagon ride.

Other activities such as tubing and kayaking are also available. There may even be a rodeo going on or Native American activities. This horse lover's paradise has 22,000 acres and over 100 miles of trails; many declared the best in Nebraska! From the hills and valleys you will catch a glimpse of buffalo, deer and antelope. Climbing up into the buttes will provide a view of the kaleidoscopic landscapes overlooking the Fort. Keep an eye out for those Big Horn Sheep!

Modern campgrounds are available in Fort Robinson's Soldier Creek and Red Cloud Campgrounds and can be reserved through the Fort's website. Horses are required to stay in the barn and stalls can be reserved through the same website. Riders can also reserve a spot in the Mare Campground and Barn by calling the Fort at (308) 665-2900. Weed free hay is **not** required on Fort Robinson proper however if staying at Soldier Creek *Wilderness* west of Fort Robinson, it will be necessary.

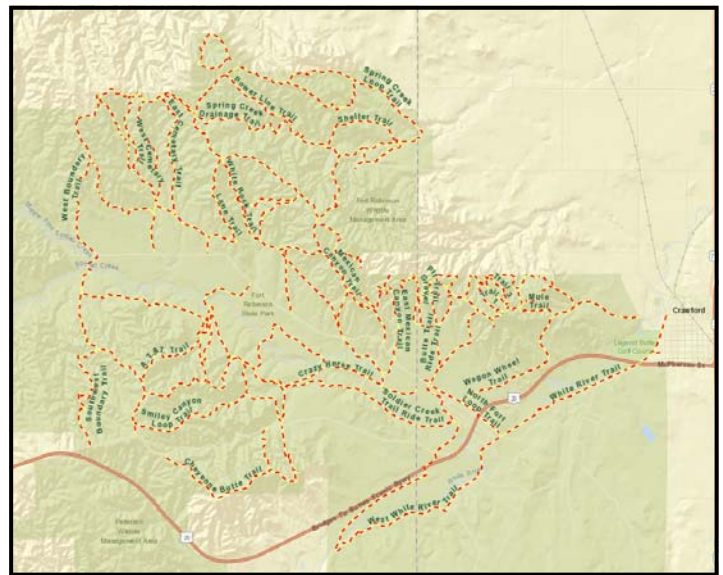
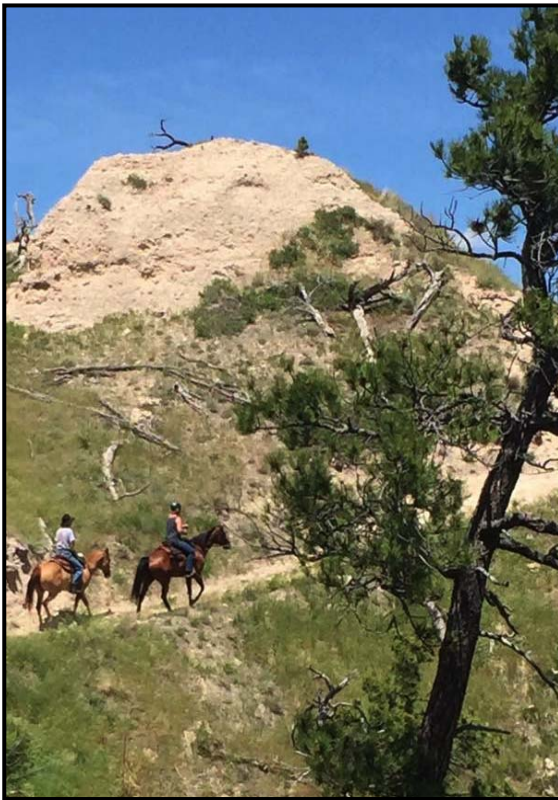


Miles of Trail	Terrain	Barefoot Friendly	Camping Sites	Water	Corrals	Amenities & Notes
100	Dirt Grass Rock Hills	Some riders will recommend footwear	Concrete	Yes	Stalls in barn	30 & 50 amp electrical sites. Picnic tables & fire rings. Do not stable horses at camp. Restroom with shower. Museums and other activities. Bring your bicycle for easy traveling around the Fort. Reservations required. Dump station.

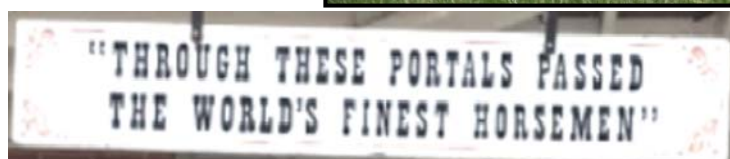
Directions: From Crawford, take Hwy 20 west 4 miles. Check in at the Ft. Robinson Lodge just beyond the Entrance sign.

Fees: Nebraska State Park permit required. Additional fees for camping. Reservations recommended.





MAP OF FORT ROBINSON TRAILS





Lake McConaughy State Recreation Area is Nebraska's largest lake boasting white sand beaches perfect for summer fun. With 40,000 acres and over 100 miles of shoreline there are riding opportunities at "Big Mac". Currently there are no marked trails or campgrounds and riders are encouraged to check in with park management for an ideal place to park and ride. We hope there will be more riding and camping opportunities in the future.

Directions: Located 12 miles north of I-80 / 8 miles north of Ogallala on Hwy 61. Nebraska State Park permit required.

ACTIVITIES



Above: Installation of corrals at Natick/Nebraska Nat'l Forest | Top Right: NHTC Trail Clearing at Branched Oak
Bottom Right: NHTC Trail Challenge obstacle

Outrider Trailhead Chadron



Located south of Chadron and north of Chadron State Park, the Outrider Trailhead on Hwy 385 offers a nice retreat on the way to or from the Black Hills. You might enjoy a day ride on Forest Service land high above Chadron State Park and with a view to the north of those Black Hills. The campground at the trailhead, created by horsemen of the area, offers sturdy corrals for your horses and water hydrants (May through October). There is a fully accessible handicap rider ramp. **Certified weed free hay required.**

The entrance to this trailhead is about 3/4 mile north of Chadron State Park's main entrance on the west side of Hwy 385 or 7.4 miles south of Hwy 20 on Hwy 385. It is a bit of a hairpin turn into the campground, so be cautious with really big rigs. From the Outrider Trailhead, you can reach the Black Hills Overlook.

Miles of Trail	Terrain	Barefoot Friendly	Camping Sites	Water	Corrals	Amenities & Notes
10	Dirt Rock Grass Hills	Yes	Grass	Yes	Yes	Primitive camping only. Handicap ramp. No bathroom facilities. Certified weed free hay required.

Directions: From Chadron, take Hwy 385 south approx. 7.5 miles Turn west to reach the trailhead. Note the hairpin turn when pulling into the area and use caution with your big rig. If you reach Chadron State Park when coming from the north, you have gone too far.

Fees: No fees for overnight use.



Office of Forest Supervisor / 125 N Main / Chadron, NE 69337

P: 308.432.0300 / W: www.fs.usda.gov/recarea/nebraska/recarea/?recid=10620

The Pine Ridge Trail

Chadron

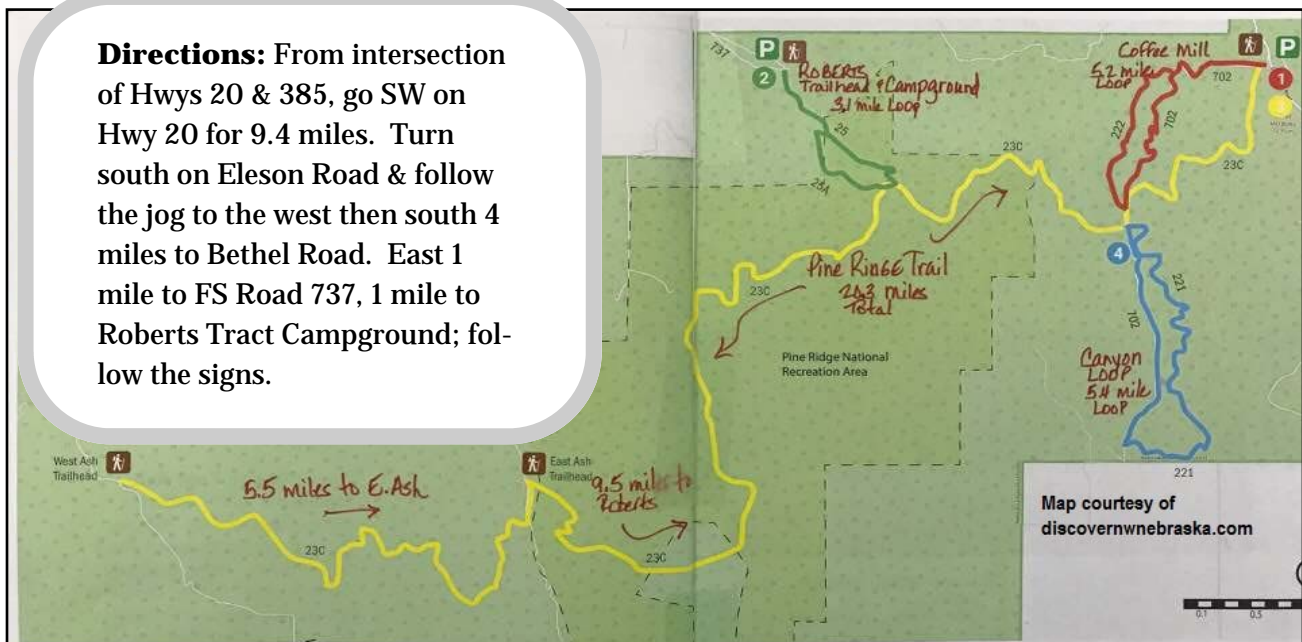


The 6,600-acre Pine Ridge National Recreation Area features the 20 mile Pine Ridge Trail beginning at the West Ash Trailhead, traveling through East Ash, the southern tip of Roberts Loop, the northern tip of Canyon Loop and ultimately ending at Coffee Mill Trailhead. In this rugged area of Nebraska, you will experience big climbs and long descents. You will need your best navigation skills as it is easy to lose the trail due to fire damaged areas. Contact the Forest Supervisor for current information on trailhead accessibility. Experienced riders and conditioned horses recommended. **Certified weed free hay required.**

Primitive horse camping is available at the Roberts Tract Trailhead with corrals and horse water. Riders should bring their own drinking water.

Miles of Trail	Terrain	Barefoot Friendly	Camping Sites	Water	Corrals	Amenities & Notes
34	Dirt Rock Grass Hills Difficult	Use caution	Dirt Grass	Yes	Yes	Roberts Trailhead provides horse corrals, rider ramp and stock water. Picnic tables, vault toilet & fire ring. No drinking water. Pack out what you bring in.

Directions: From intersection of Hwys 20 & 385, go SW on Hwy 20 for 9.4 miles. Turn south on Eleson Road & follow the jog to the west then south 4 miles to Bethel Road. East 1 mile to FS Road 737, 1 mile to Roberts Tract Campground; follow the signs.



Forests Supervisor's Office / 125 Main Street / Chadron, NE 69337

P: 308.432.0300 / W: www.discovernwnebraska.com/parks-wildlands/

Sam McKelvie/Steer Creek Valentine



Equines now welcome at Steer Creek Campground! The Nebraska National Forest has opened Steer Creek Campground at Samuel McKelvie National Forest to horse camping. If you like the smell of Ponderosa pine trees, quiet relaxing camping, gazing at a million stars at night and having 116,000 acres to ride—this place is for you! No marked trail; open riding. Leave gates as you find them. The Nebraska Horse Trails Committee worked with Forest Service on placement and installation of 8 corrals. The campground has 23 sites, some able to handle large rigs. It is primitive with hand pumped water, two vault toilets, picnic tables, fire rings, manure bunker and lots of shade. Please tie your horse to trailer for saddling and unsaddling only. If corrals are full, there is a grassy area across road from camp where you can put up an electric fence. **Certified weed free hay required.**

More information on this new riding opportunity will be available with the next publication. In the meantime, contact the local Forest Service for maps and information.

Miles of Trail	Terrain	Barefoot Friendly	Camping Sites	Water	Corrals	Amenities & Notes
Unlimited	Dirt Grass Hills	Yes	Asphalt	Yes	Yes	Primitive camping only. Picnic tables & fire rings.

Directions: From Nenzel, (Hwy 20), turn south on NE-16F and drive 18.1 miles south to Steer Creek Campground.

From Valentine, head south on Hwy 97 for 26 miles, then turn right onto the Merritt Dam Road. Continue on the Merritt Dam Road (County Road 5) for 15 miles. At the T, turn left onto at State Spur 16F and go 2 miles to the campground.

Fees: Camping fees are posted at collection box near campground entrance.



Nebraska National Forest / Bessey Ranger District / Halsey, NE

P: 308.533.2257 / W: www.fs.usda.gov/recarea/nebraska/recarea/?recid=30324

Soldier Creek Wilderness Crawford



The Soldier Creek Wilderness Campground is adjacent to the Nebraska National Forests & Grasslands, Soldier Creek Wilderness and Ft. Robinson State Park. The 7,700+ acres was used in conjunction with Fort Robinson Military Reservation as a wood reserve and horse and mule pasture. Now you will find elk, deer, turkeys, bobcats and eagles. Recovering from a fire in 1989, the Ponderosa Pine covered areas give way to grassy fields. Soldier Creek Wilderness is non-motorized and only open to horseback riding and hiking. The Boots and Saddle Trail and the Trooper Trail Loop will give riders almost 18 miles of trail. Trail brochures are available at the Pine Ridge Ranger District Office.

Trailhead facilities are located in the campground which hosts primitive campsites, several picnic tables, a hand pump well with potable water, vault toilets, garbage cans and a large 15-paddock corral system. Fire rings only; no grates or grills. **Certified weed free hay required.**

Miles of Trail	Terrain	Barefoot Friendly	Camping Sites	Water	Corrals	Amenities & Notes
18	Dirt Grass Sand Hills	Yes	Grass	Yes	Yes	Primitive camping only. Hand pump water, vault toilets. Dump station and other amenities at nearby Fort Robinson where a Nebraska Park permit will be needed.

Directions: From Ft. Robinson, drive north-west on Soldier Creek Road approximately 6 miles. You will drive into camp.

Fees: No fee for day riding. See park for camping fees.



Pine Ridge Ranger District / 125 N Main / Chadron, NE 69337

P: 308.432.0300 / W: www.fs.usda.gov/recarea/nebraska/recarea/?recid=80609

Bader Park Chapman



Bader Memorial Park is located in central Nebraska, just south of Chapman. Tucked in next to the Platte River, this 270-acre park has about 5 miles of horse trails. Great for day riding; equestrians will be delighted to see much wildlife along the trails including jack rabbits, deer, ducks and geese. If the river is up, the water trail which winds through the trees will have you going back for more. Follow the mowed grass trails to the north and meander along the running creek and big cottonwood trees. To the south, you will pick up the trail along the Platte River and enjoy the water fowl on the water and shores.

The horse camp is located to the right of the entrance. Portable fencing in designated area will be necessary. Visitors are encouraged to call before hauling as horse camping is limited during peak seasons at Bader Park.

Miles of Trail	Terrain	Barefoot Friendly	Camping Sites	Water	Corrals	Amenities & Notes
5	Dirt Grass Flat	Yes	Grass	Yes	No	30 & 50 amp electrical sites. Picnic tables. Restroom with shower. Playground, swimming pond. Fishing. Seasonal hunting. Call before you haul. Dump station in the park.

Directions: From Hwy 30 in Chapman, turn south on Bader Park Road for approximately 2.5 miles. Entrance on the right.

From I-80, take Aurora exit north on Hwy 14 until you come to Marquette Road. Turn left on paved road for approx. 10 miles. Look for Bader Park on your left after you cross the Platte River bridge.



Bader Park /898 Bader Park Road, Chapman, NE 68827
P: 308.986.2522 / E: baderpark73@yahoo.com / W: www.baderpark.com

Bassway Strip WMA Gibbon



Bassway Strip Wildlife Management Area is located just south of the interstate at the Minden exit. There are four ponds and 7 miles of river frontage. Park on the fishing lake or on pull-outs along the access road which will dead end at a small parking area. Ride east along river or interstate. Total riding about 10 miles. If you ride the access road, there is a cattle guard. The horse gate has a padlock; code 0312. All riding is on narrow strip between interstate and river. Also enjoy fishing and bird watching. Barefoot friendly. Dispersed camping, first come, first served.

Directions: Take I-80 to Exit 279. Turn south on Hwy 10 and Bassway Strip Road will be on your left. Nebraska State Park permit required.



NHTC Volunteers circa 2002



NHTC Volunteers 2016

NHTC Trail Challenge 2015



Oak Creek Trail Clearing 2003



Big Canyon Inn Springview



Big Canyon Inn is located north of Bassett on Hwy 7 near Springview. As the name promises, you will ride down the sandy trails into the canyons which are said to be the deepest in Nebraska. Follow the clear water streams and ride through the Ponderosa pines with remnants of another time lost to the landscape. Climb high on the bluffs on what was once a Nebraska ski slope! Autumn offers beauty among the changing colors of the sumac next to the Niobrara River.

The property owners offer rig parking on their ranch with access to a barn with hot showers, bathroom and a kitchenette. A gas grill and conventional stove are available for your use. If you don't feel like roughing it, bed and breakfast accommodations may be available. Your horses will stay in large pens on the ranch. Reservations required.

Miles of Trail	Terrain	Barefoot Friendly	Camping Sites	Water	Corrals	Amenities & Notes
10+	Dirt Grass Hills	Yes	Grass	Yes	Yes	110 electrical hook-ups. Restroom with shower. Located next to Hwy 7. Seasonal hunting.

Directions: From Bassett, drive north 15 miles on Hwy 7. You will go through a deep canyon and destination will follow on your right. From Springview, take US-183 south for 2 miles. Turn left on Hwy 7 for 8 miles. Destination on your left.

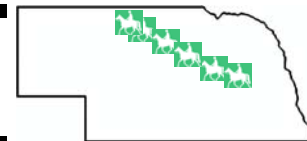
Fees: Contact Big Canyon Inn for pricing.



Big Canyon Inn / 44357 State Hwy 7 / Springview, NE 68778

P: 402.497.3170

The Cowboy Trail Valentine to Norfolk



The Cowboy Trail is the longest trail in Nebraska running 321 miles across northern Nebraska, following the old Chicago & Northwestern rail route. About 200 miles between Norfolk and Valentine have been developed. This is a part of Nebraska most people never see. Closer to Norfolk you will experience farm country—from pastures to amber waves of grain. On the western end of the trail, this picturesque ride will take you through the small welcoming communities with the landscape changing to include forested canyons and streams. The railroad abandoned the line in 1992 and the Rails-to-Trails Conservancy purchased the corridor for the state. Whether hiking, biking or horse trail riding (please stay to the side of the limestone), this trail will give you a glimpse of our state like none other. Make a goal to ride the entire trail, planning overnights along the way or pick a different area each time you ride! There is enough trail for quite an adventure! One paragraph in this booklet does not complete the picture. “Google” the Cowboy Trail and find more stories about this trail and accompanying pictures.

Miles of Trail	Terrain	Barefoot Friendly	Camping Sites	Water	Corrals	Amenities & Notes
200+	Grass next to limestone	Surface may allow but distance may dictate proper footwear	Contact towns along the way	Contact towns along the way	No	All horseback riders are required to ride on the right-of-way and to stay off the limestone surface. Some communities along the trail provide camping and welcome travelers to use their amenities. Most are located 10 to 15 miles apart.

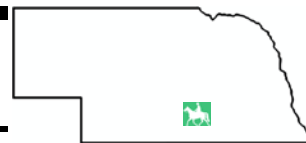


Directions: The trail-head in Norfolk is located at Ta-Ha-Zouka Park in the southwest part of town. It is recommended that perhaps riders pick up the trail in the less populated Battle Creek. Parking in Valentine is east of town.



Nebraska Game & Parks / 2200 N. 33rd Street / Lincoln, NE 68503
P: 402.471.0641 / W: www.outdoornebraska.com/cowboytrail/

Cottonmill Park Kearney



Originally created in 1886 by filling the Kearney Canal, the 43-acre lake acted as a storage reservoir that generated power for the old Cottonmill factory. In 1998, Cottonmill Lake underwent a complete restoration specifically to create a top quality fishing lake. There are about 5 miles of barefoot-friendly horse trails. It is important riders pay special attention to ensure they do not ride on the Frisbee course or the trails west of Old Father's Prairie. No riding in the swimming hole and manure needs to be kicked off the trails. Clean up around your trailer, putting droppings back into your trailer. For questions, contact Christine Wilson at 308.320.4908.

Directions: From Kearney, head west on Hwy 30 until you reach Cottonmill Avenue on the west side of town. Turn right into the park.

Crystal Lake Ayr



Crystal Lake Recreational Area is a 33-acre park adjacent to the Little Blue River and includes a 5-acre lake. Dispersed riding.

Directions: From Ayr, take Crystal Lake Avenue north 1 mile. Turn west on Pony Express Road and turn right.

TEAMWORK



Top: Trail Clearing on the Oak Creek Trail
Right: Trail Clearing at Two Rivers
Bottom: Trail Clearing on the MoPac



Davis Creek Loup City



Davis Creek Reservoir and WMA offers hunting, fishing and hiking. Dispersed riding north and west of the campgrounds or to the south and east. There are no marked or mowed trails. Dispersed riding. No designated horse camp.

Directions: From Loup City, drive east on 790th Road for 6 miles. Turn north on Ashton Avenue for 9.5 miles. Turn right toward Davis Creek for 1.3 miles to reach your destination.

Liberty Cove Lawrence



Ride the grasslands around the 36-acre lake. Liberty Cove Recreation Area is a 260-acre park offering about 4 miles of dispersed riding through the tall grass. No marked trails, dispersed riding. Camping available. No horse facilities.

Directions: From Lawrence, take Hwy 4 west for 1.7 miles. Turn south onto Road 2400 for 2 miles. Turn right on Road U and the destination is on your right. Managed by Blue River NRD.

Loup Junction St. Paul



Loup Junction State Wildlife Management Area is located along the North Loup River north of St. Paul. No marked trails. Dispersed riding.

Directions: From St. Paul, drive north on Hwy 281 for 2.6 miles. Turn right on Twin Forks Lane for 3 miles. Destination is on your left.

Work Hard Play Hard



Above: Trail Clearing at Two Rivers

Left: Riding at Nebraska National Forest

Nebraska Nat'l Forest Halsey



Over 90,000 acres in the Sandhills of central Nebraska, the Bessey Ranger District was established in 1902 for recreating forests in treeless areas to use as a national timber reserve. This resulted in the largest man-made forest in the United States supplying over 3 million seedlings yearly.

Pick up a map at the park headquarters or load the Avenza app on your smart phone. No marked trails; follow the windmill numbers as you ride the trails, two-tracks or just dispersed riding. Native grasses provide an array of color over the sandy terrain. Riders are welcome to pass through gates, leaving them as they were found. Lots of wildlife; deer, porcupines and livestock as well. There are literally hundreds of miles to meander at this special place in Nebraska.

Natick Campground is a lovely shaded area with rock pads. There are wooden corrals by the windmill offering fresh water for the horses. The Nebraska Horse Trails Committee installed a row of metal corrals closer to the campsites. No stabling at the campsites. There is a vault toilet and water pump in the campground.



Corrals can also be found at the Whitetail Campground but most find it difficult for big rigs to get access due to the deep sand roads. Whitetail is quite popular with the ATV crowd which are not allowed to ride out of Natick. Note the road to Natick is old and bumpy. Take it slow! **Certified weed free hay required.**

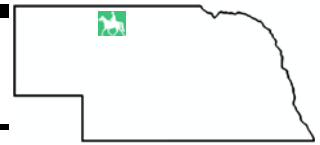
Miles of Trail	Terrain	Barefoot Friendly	Camping Sites	Water	Corrals	Amenities & Notes
100+	Dirt Grass Hills	Yes	Grass or rock	Yes	Yes	Primitive camping only. Picnic tables & fire rings. Hand pump for human water. Vault toilets. Lots of water from tanks on the trail.

Directions: Enter from Hwy 2 just west of Halsey. Follow the road signs to Natick or Whitetail Campgrounds. Bumpy road!

Fees: No entry fee or permit necessary. Camping fees apply. Register at headquarters or camp kiosk.



Niobrara River Ranch Valentine

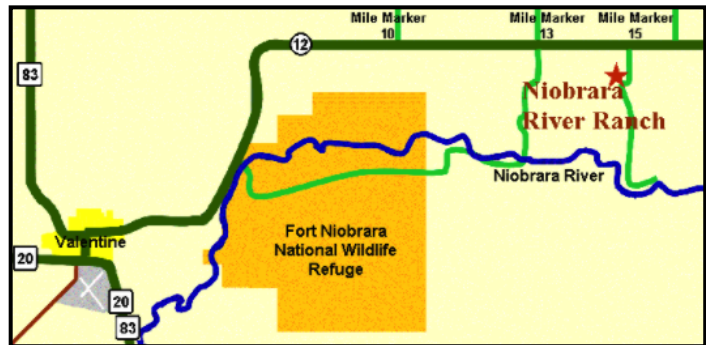


The Niobrara River Ranch has been in the family for generations and the trails allow private access to the Niobrara River and many secluded waterfalls. Abundant wildlife, even elk, wander these valleys and canyons. The folks at the ranch promise you an adventure with over 25 miles of beautiful trails overlooking the Niobrara River near Nebraska's Smith Falls. An operating beef cattle ranch, the recreational component opened in 1997. Besides trail riding, they offer hunting, camping, hiking, canoeing, tubing and kayaking. The ranch offers 20-30 stalls (indoor and outdoor) and 15 electrical hook-ups for trailers. The ranch also has several cabins on the property. Bring your whole family!

Miles of Trail	Terrain	Barefoot Friendly	Camping Sites	Water	Corrals	Amenities & Notes
25	Dirt Rock Grass Hills	Yes	Grass	Yes	Yes	Indoor and outdoor stalls, water, electrical hookups. Access to other recreational activities on the Niobrara River including kayaking, canoeing, fishing and tubing.

Directions: 15 miles east of Valentine on Hwy 12. Go south on county road toward Smith Falls.

Fees: Contact Niobrara River Ranch for rates.



Niobrara River Ranch / Valentine, NE
P: 866.282.8677 / E: nrranch@gmail.com / W: www.nrranch.com

Niobrara State Park *Niobrara*



Located near the Niobrara and Missouri Rivers, the Niobrara State Park offers 120 acres of free-range riding. No horses are allowed on the trails used by park horses. The equestrian campground provides primitive camping with one large corral which will hold several horses. Campground is first come, first served and includes non-modern restroom, picnic table and grill. Water will need to be bucketed to the area.

Directions: Drive 2.6 miles west of Niobrara. Park located off Hwys 12 & 14. Nebraska State Park permit required. Additional fees for camping.



**HELPING *with*
HORSEPOWER**

NHTC does a major trail repair at Branched Oak Lake, Area 7

**HYDRATING *the*
HORSEPOWER**



After installing new corrals at Natick Campground at Nebraska National Forest, NHTC members enjoy an afternoon ride and some “water cooler” talk.

Peckernack Trail Alma



Located on the south side of Harlan County Lake and just seven miles from the Kansas state line, the Peckernack Trail near Alma is full of hidden surprises. Fourteen miles of trail with many loops along the way will give you spectacular views from high above the lake. Game birds and deer are abundant. Find the fictional Peckernack Mine and look for the tee pees around the bend. A group of interested horse owners have taken over upkeep of this trail and it is a gem. Mowing equipment for maintaining these trails was recently provided by the Nebraska Horse Trails Committee.

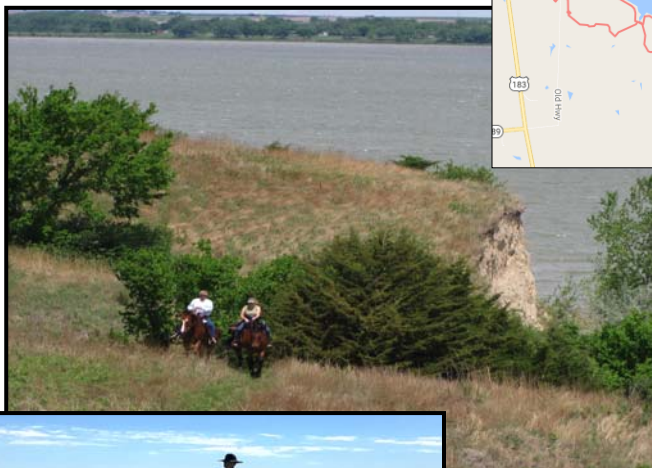


There is a horse rest area at the trailhead on Hwy 183. There is a hitching post and hand-pumped water. Haul out what you bring in.

Miles of Trail	Terrain	Barefoot Friendly	Camping Sites	Water	Corrals	Amenities & Notes
14	Dirt Grass Hills	Yes	Rest Area	Yes	No	Primitive camping only. No amenities. Haul out what you bring in.

Directions: From Alma, take Hwy 183 south across the bridge and turn east into Alma Vista Picnic Area on the other side of the bridge. Horse parking in the loop to the south.

Fees: Nebraska State Park permit required.



Peckernack Trail, Hwy 183, Alma, NE 68920
P: 308.799.2105

Prairie Lake Hastings

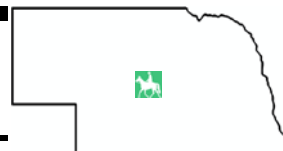


Prairie Lake Recreation Area has 160 acres of public land which includes 36 acres of water. This rustic area provides excellent wildlife habitat and presents many natural grasses and wildflowers. Enjoy the mowed trails around the lake and through the trees. About 5 miles of trail. Camping is available. No corrals.

Directions: Take Hwy 34/US-6 west from Hastings 8 miles. Turn south on S. Adams Central Avenue for 2 miles. Turn west on W. Prairie Lake Road. Parking lot approximately 1.5 miles on your left. Nebraska State Park permit required.



Pressey Park Oconto



Pressey Park Wildlife Management Area is 1,700 acres which includes hills, canyons and grasslands along the South Loup River. The park offers dispersed riding on two-tracks and cattle trails. There are two hours of good riding on each side of the river bridge. The old mill site has a pond with huge water lilies. Electric fence has easy access gates. Water tanks on the hill. Pay particular attention to hunting seasons on the east side. Camping is available west of the bridge. No corrals.

Directions: Take Hwy 21 north from Oconto for 5.5 miles. There is parking on both sides of the highway river bridge. No permit required.



THE BEST TOOLS AVAILABLE FOR CLEARING TRAIL

South Shore/Lewis & Clark Crofton



Lewis and Clark State Recreation Area, named after the explorers who camped nearby, is Nebraska's second largest reservoir located on the Nebraska/South Dakota border. There are about 5 miles of trails overlooking the lake's white cliffs providing breathtaking views of the sunrises. There trails run through a wooded area and are used for snowmobiling in the wintertime.

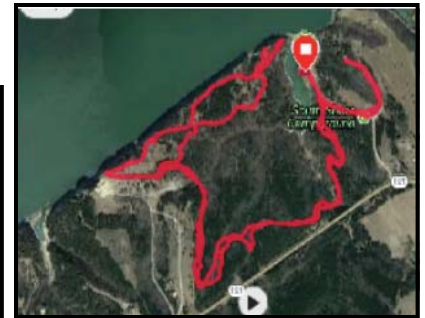
A campground has been developed with corrals, water, restrooms and picnic areas.

Miles of Trail	Terrain	Barefoot Friendly	Camping Sites	Water	Corrals	Amenities & Notes
5	Dirt Grass Hills	Yes	Grass	Yes	Yes	Primitive camping. Corrals, water, restrooms, picnic tables and fire ring.

Directions:

South Shore Campground is located 9 miles north of Crofton, just off Hwy 121.

Fees: Nebraska State Park permit required. Camping fees apply.



Lewis & Clark SRA / 54731 897 Road / Crofton, NE 68730

P: 402.388.4169 / W: www.outdoornebraska.gov/lewisandclark/

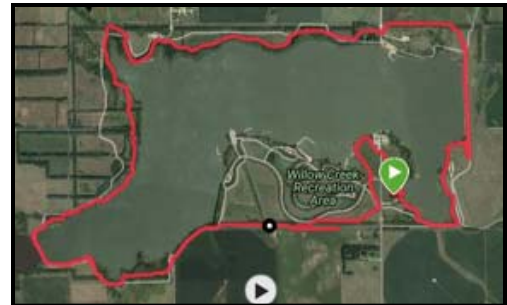
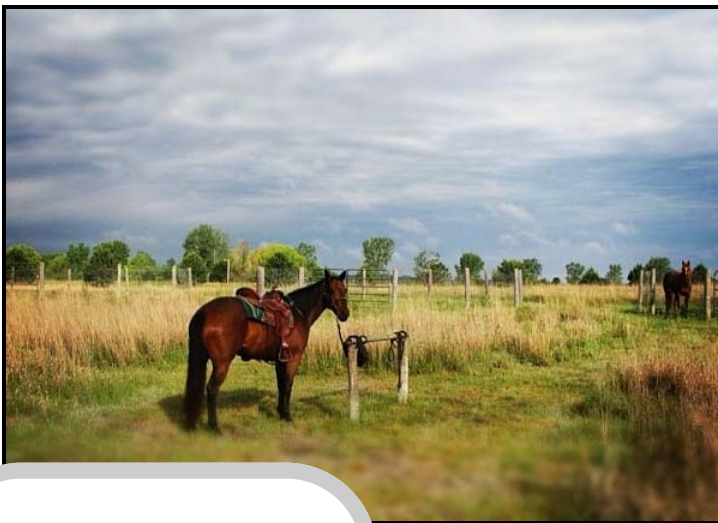
Willow Creek Pierce



Willow Creek State Recreation Area is a 1,600-acre area that includes a 700-acre lake. Enjoy the horse path that follows near the multi-use trail over the dam and around the lake. Some areas wooded. In the spring, you will find a row of lilac bushes in full bloom. The park does ask that horses stay off the limestone trails.

Horse camping offers modern camping pads with electricity. Horses will enjoy the spacious corrals. Vault toilets nearby. Be sure and reserve your spot in advance as these will be sold to non-equestrian RV's if not filled by Thursday of each week.

Miles of Trail	Terrain	Barefoot Friendly	Camping Sites	Water	Corrals	Amenities & Notes
10	Grass Flat	Yes	Concrete	Yes	Yes	30 and 50 amp electrical. Reservations recommended. Hiking, fishing and paddle boating available.



Directions: Just minutes from Pierce, take H & N Blvd. to 549 Avenue. Follow signs to the lake.

Fees: Nebraska State Park permit required. Additional fees for camping. Contact park for information.

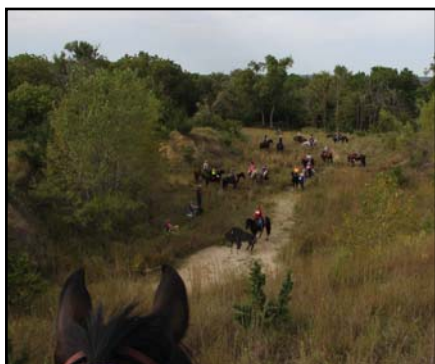


Willow Creek SRA / 54376 852 Road / Pierce, NE 68767
P: 402.329.4053 / W: www.outdoornebraska.gov/willowcreek/

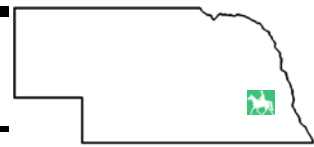
NHTC Trail Challenge **Branched Oak**



It's not all work and no play. The popular NHTC Trail Challenge is a great way to meet other trail riders and the NHTC members. Held each September, this important fundraiser unites about 75 riders and a couple dozen volunteers for an afternoon of riding, challenges, scavenger hunt, food, auction and prizes! Check out our website nehorsetrails.com for the next Trail Challenge and sign up early!



Bluestem Lake Martell



Bluestem State Recreation Area located southwest of Lincoln provides 742 acres for picnicking and outdoor recreation. No marked trails or horse camping. Dispersed riding only.

Directions from Lincoln: Take Hwy 77 south and turn west on Hwy 33. Drive 4 miles west and turn south on SW 42nd for 1 mile. Destination is on your right. Nebraska State Park permit required.

Buckskin Hills Newcastle



Buckskin Hills Wildlife Management Area is located in northeast Nebraska. A small 340-acre area with a 75-acre lake, is open to hunting and fishing. There are no marked trails at Buckskin Hills; dispersed riding around the edge of the area will provide a couple of hours riding. The park requests that a permit be requested if there are more than 3 or 4 riders in your group.

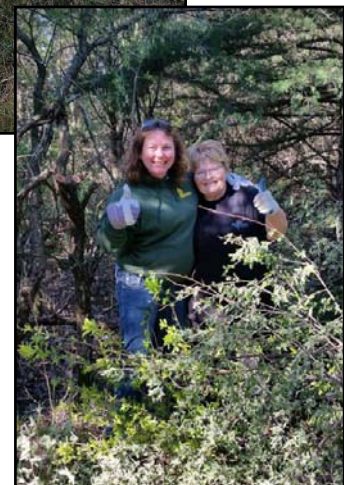
Directions from Newcastle: Take Hwy 12 west for 2.4 miles. Turn left on 581 Avenue for 2.8 miles. Turn right on 883 Road and then turn right into Buckskin Hills. Call 402.254.6758. Managed by Lewis & Clark NRD.

Our Best Power Tools Are People

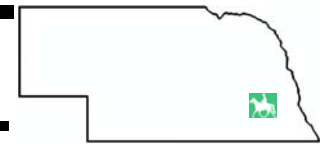


Left: Trail Clearing at Two Rivers

Above & Right: Trail Clearing at Branched Oak



Branched Oak Lake Raymond



Branched Oak Lake State Recreation Area is located west of Raymond in Lancaster County. The largest lake in eastern Nebraska with about 1,800 acres of water. The lake has two swimming beaches and is a popular recreational area for boating, swimming and fishing.

Area 2 horse camping is in the Homestead Campground area near the southwest corner of the lake. Funded in part by a matching grant from the Nebraska Horse Trails Committee, this modern equestrian camp features 14 white rock pads with electrical hookups and hitching posts. One campsite is concrete and handicap accessible. Each campsite comes with one horse stall. **Note:** Reservations are not available online. Riders must phone 402.783.3400 to reserve. If the campground is not reserved by Thursday, sites will be given to other RV campers.



The primitive camp is northwest of the modern camp and portable fencing is allowed. For day use, riders should park their rigs in the designated area adjacent to the primitive campground.

From the campground, follow the signs to the **Area 2** trails (shown below) which run through the woods and near the shoreline and continue to the dam at the east end of the lake. With the loops and turns, riders can enjoy about 10 miles of shared trail. Across the Raymond Road blacktop is the wildlife management area which is also open to riders. There are not marked trails and riders should not enter area during hunting seasons. Branched Oak is a favorite for southeast Nebraska and a destination ride for those traveling.

Miles of Trail	Terrain	Barefoot Friendly	Camping Sites	Water	Corrals	Amenities & Notes
10+	Dirt Grass Flat	Yes	Rock Grass	Yes	Yes	30 & 50 amp electrical sites. Picnic table and fire rings. Vault toilet. Handicap rider ramp. Fishing. Seasonal hunting. Call the park to reserve equestrian camping. Modern bathroom with showers and dump station at Area 1.

Directions to Area 2: From Hwy 79 at the Raymond, Nebraska corner, take Raymond Road west 5.5 miles. Turn right into Homestead Campground Area 2 and veer left to the Equestrian campground.

Directions to Area 3 & 7. From Hwy 79 at the Raymond, Nebraska corner, take Raymond Road west 6 miles. Turn right onto 140th Road and then turn right onto W. Branched Oak Road. Go about 1/2 mile and turn right into Area 3 for parking or primitive camping. For day ride only, continue east to the intersection and turn left into Area 7.

Fees: Nebraska State Park permit is required. Additional fees for camping.



ATTENTION
CLEAN THIS CORRAL AFTER USE
• DISPOSE IN DESIGNATED AREA •

Area 3 and 7 (shown to the right) offers about 7 miles of shared trails. Popular among bike riders, the narrow trails circle around cedar trees near the shoreline and in open fields. To the west of the permanent trails is a wildlife management area which may be open for riding at specific times. Please consult with the park ranger for availability.

In Area 7, riders can unload for day rides in the designated parking lots. Primitive camping is available at Area 3 and portable fencing can be used. Vault toilet and water hydrant available.

BRANCHED OAK LAKE Map of Area 3, 7



Above: South view of lake from wildlife area
Right: Ribbon cutting at Area 2 Campground
Below: Area 2 equestrian campground



Branched Oak SRA / 12000 W Branched Oak Road / Raymond, NE 68428

P: 402.783.3400 W: www.outdoornebraska.gov/branchedoak/

Camp Moses Merrill Linwood



Nestled in the rolling hills near Linwood and just south of the Platte River, Camp Moses Merrill is a best kept secret! Sponsored by the Ministry of the American Baptist Churches of Nebraska, this retreat provides a Christ-centered place of discovery. There are lots of family activities including swimming, tennis and basketball and even a zip-line.

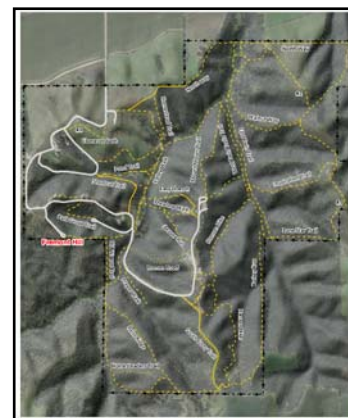
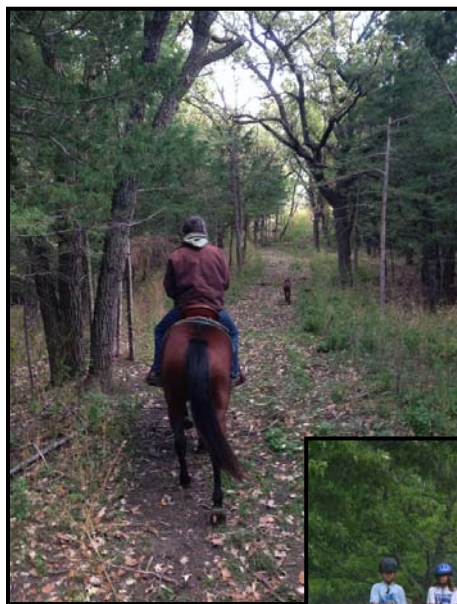
There are lots of big climbs along these dirt and grass trails; you will want to be riding a fit horse. You will see deer around every corner as you explore this peaceful paradise. Horse camping is allowed on Fremont Hill. The campground is very small with only parallel parking. Be sure and pull ahead to allow ample space for other campers or day riders. There are 7 sites with electricity and water. Portable fencing or tying to the trailer is allowed. You may want to call ahead as other activities may close the horse trails or campground. Reservations recommended. Ride **only** on designated horse trails.

Miles of Trail	Terrain	Barefoot Friendly	Camping Sites	Water	Corrals	Amenities & Notes
10	Dirt Grass Very hilly	Yes	Grass	Yes	No	110 and 30 amp electrical. Water hydrants, picnic tables and fire ring. Porta-potty in camp. Bathroom and shower house at visitor center. Pool, hiking, biking, zip line. Dump station.

Directions: From Hwy 79 at Morse Bluffs, travel 7 miles west on Linwood Road. Turn south at Camp Moses sign.

From Linwood, travel 2 miles east. Turn south at Camp Moses sign.

Fees: Self-register upon entry at the Visitor Center by the windmill. Camping and trail fees apply.



Camp Moses Merrill / 2849 Road 31 / Linwood, NE 68036

P: 402.666.5639 / E: contact@campmerrill.com / W: www.campmerrill.com/

Cunningham Lake Omaha



Glenn Cunningham Lake in northern Omaha is a favorite of local riders. The 7.5 mile shared trail goes completely around the lake with offshoots to extend the ride. More than 1,000 acres of park land surround the lake including 450 acres north of Hwy 36 which is a wildlife area. This grassy trail will provide views of the lake as well as riding through the woods. Don't be surprised to find Frisbee golfers, kites and other recreational activity on the trail.



The trail begins in the parking lot off Hwy 36, Entrance 8 of the lake. Note on the north end of the lake, riders will cross Hwy 36 and ride on the north side to cross the bridge. Although the area is flat and traffic can be clearly seen in both directions, riders should be cautious when crossing the highway.



The Nebraska Horse Trails Committee has worked with other user groups to keep the trails cleared and maintained and been responsible for some improvements for all trail users. There is no horse camping at this lake; day use only. Keep horses out of the campground and off the beach.

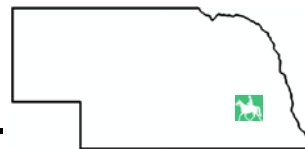
Miles of Trail	Terrain	Barefoot Friendly	Camping Sites	Water	Corrals	Amenities & Notes
8+	Dirt Grass Some hills	Yes	N/A	Yes	N/A	No camping. Water hydrants can be found at the lake. Bathrooms and picnic tables. Clean up any manure around your trailer before departing.

Directions: From I-680, take the 72nd Street Exit. Drive north 1.4 miles on 72nd Street. Turn west on Hwy 36 (Bennington Road). Drive 1.4 miles west and turn south on park road at the entrance just before the bridge.

Fees: No day use fees.
Park is managed by City



Conestoga Lake Denton



Conestoga State Recreation Area is a community lake surrounded by 486 acres of grassland. There are hiking/biking trails and fishing. Small area for dispersed riding.

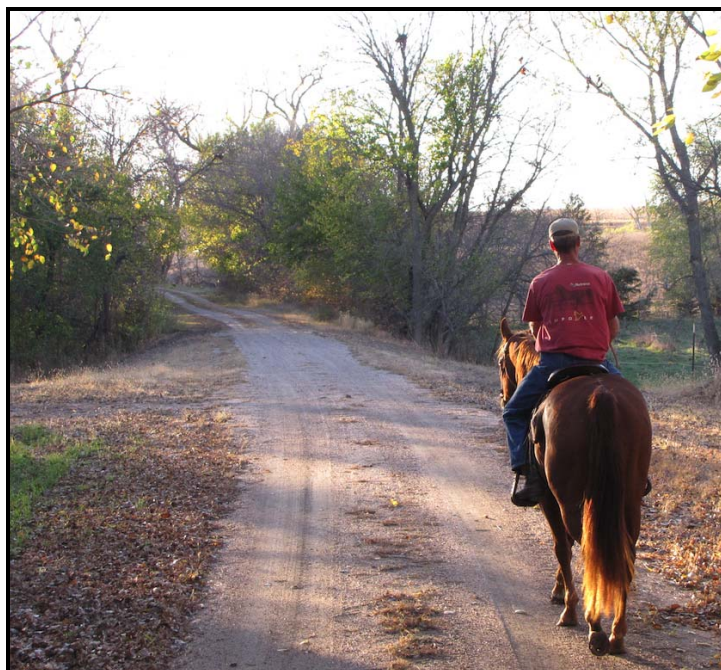
Directions from Lincoln: Take O Street/Hwy 6 west to SW 84th St/S55A. Turn south for 6.9 miles. Turn west on Conestoga Lake State Recreation Road and drive to destination.

Czechland Lake Prague

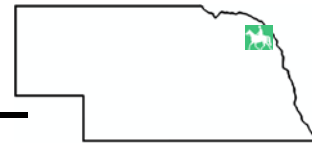


Czechland Lake Recreation Area is a small lake with about 260 acres of public land. A popular fishing lake, there is a small area to the northwest of the lake with mowed trails to enjoy a short ride. If you take the Rescue County Road over the dam and head northwest, you will reach a dirt road at about 1.5 miles. Follow that shaded road another 4 miles or so and you will reach the old railroad town of Rescue, now a modern day ghost town. It will give you more miles and a quiet ride in the Saunders County countryside.

Directions : The lake is located one mile north of Prague on Hwy 79 and managed by the Lower Platte North NRD.



Danish Alps Hubbard



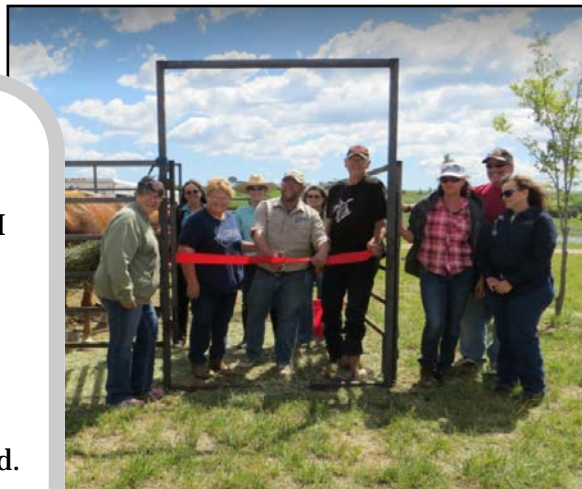
Named after the early Danish settlers, the Danish Alps State Recreation Area's new equestrian camp offers lakeside views and a four mile barefoot friendly, multi-use trail. Concrete planking over a water crossing was provided and installed by the Nebraska Horse Trails Committee to complete the horse trail around the lake. Wander south to the wildlife area and all total, you will ride close to 10 miles showcasing not just the lake but the farm fields of Nebraska. Be cognizant of hunting seasons.

Horse campers will enjoy modern conveniences such as electrical hook-ups on rock pads, a bath house and water hydrants. Your horse will be stalled in a nearby corral, some provided by the Nebraska Horse Trails Committee. Primitive camping is located southwest of the modern campground. Other activities include hiking, biking, fishing and paddle boating. Visitors are encouraged to make reservations so spots will not be filled by other RV campers.

Miles of Trail	Terrain	Barefoot Friendly	Camping Sites	Water	Corrals	Amenities & Notes
10	Dirt Grass Some hills	Yes	Rock	Yes	Yes	30 & 50 amp electrical sites. Picnic tables and fire rings. Restroom with shower. Fishing. Seasonal hunting. Dump station.

Directions: Minutes from Hubbard, turn south off Hwy 35 on M Ave. Drive south 1.5 miles and turn east on 203rd Street.

Fees: Nebraska State Park permit is required. Additional fees for camping.



Danish Alps SRA / 1260 200 Street / Hubbard, NE 68741
P: 402.632.4109 W: www.outdoornebraska.gov/danishalps/

Indian Cave Shubert



Overlooking the Missouri River in southeast Nebraska, Indian Cave State Park offers trail riding deluxe! The trails were developed by a horse trail rider over forty-five years ago and are still enjoyed today. Close to 16 miles of wide, shaded dirt trails winding through the bluffs offer majestic views of the river. Be sure your horse is in shape to tackle the hilly terrain! You will see wildlife along these hard-wood-lined trails. Autumn offers spectacular fall foliage and the park's annual "Haunted Hallow" which includes hayrack rides and other family-friendly activities. Indian Cave itself cannot be reached by horseback but be sure to visit this site of prehistoric Native American petroglyphs.



The primitive horse camp has been recently expanded to offer both grass parking and some permanent pads. There is a large picnic shelter, fire rings and hitching posts in the camping area. The Nebraska Horse Trails Committee donated 12 corrals to this park, available first come, first served. Portable fencing is permitted. Horse water is provided via a water wagon in camp. Riders must bring their own water. Vault toilets at horse camp and shower houses available in the park.

Miles of Trail	Terrain	Barefoot Friendly	Camping Sites	Water	Corrals	Amenities & Notes
16	Dirt Grass Very hilly	Yes	Grass Concrete	Yes	Yes	Primitive camping only. Picnic tables & fire rings. Black powder range, hiking and biking. Old structures from St. Deroine river town. Living history weekends throughout the summer. Dump station.

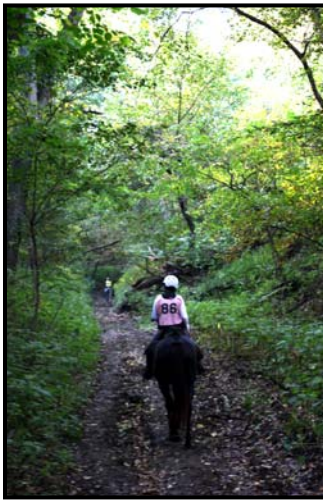
Directions: From I-29, drive west on Hwy 136 for 9.4 miles. Turn left onto Hwy 67 South and go 9.2 miles. Turn left at the Indian Cave sign (Spur 64E). Register to camp at kiosk when at the entrance.

Fees: Nebraska State Park permit required. Additional fees for camping. Contact



Indian Cave State Park / 65296 720 Road / Shubert, NE 68437

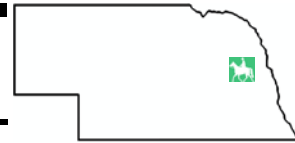
P: 402.883.2575 W: www.outdoornebraska.gov/indiancave/



The country's longest running Competitive Trail Ride is held each fall at Indian Cave



Dead Timber/Powderhorn [Scribner](#)



Dead Timber State Recreation Area is a 200-acre park near the Elkhorn River. On the west side of Dead Timber is Powderhorn Wildlife Management Area. Shady and lots of wildlife. Be cognizant of hunting seasons if riding in this area. There are no marked trails. Dispersed riding only.

Directions: To reach Dead Timber, take Hwy 275 seven miles north of Scribner. Turn east on County Road B for 1.5 miles & then south to the park. Parking for Dead Timber is just off the highway near the bridge. Look for signs. Nebraska State Park permit required.

Hormel Park [Fremont](#)



Hormel Memorial Park is located in southwest Fremont (Inglewood). Turn west at the Windmill Café and park off of Ridge Road. There are no marked horse trails. Follow paths through the park.

Directions: Hwy 77 to Inglewood and turn west on Ridgeland Avenue and follow it to S. Ridge Road.

Maskenthine Lake [Stanton](#)



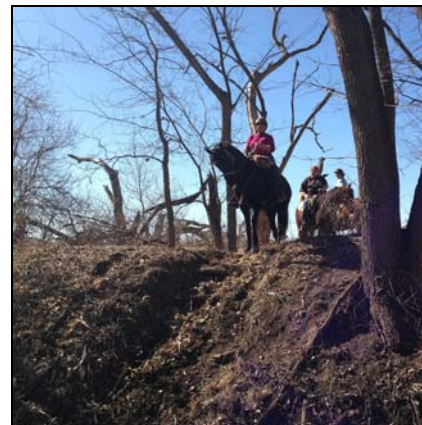
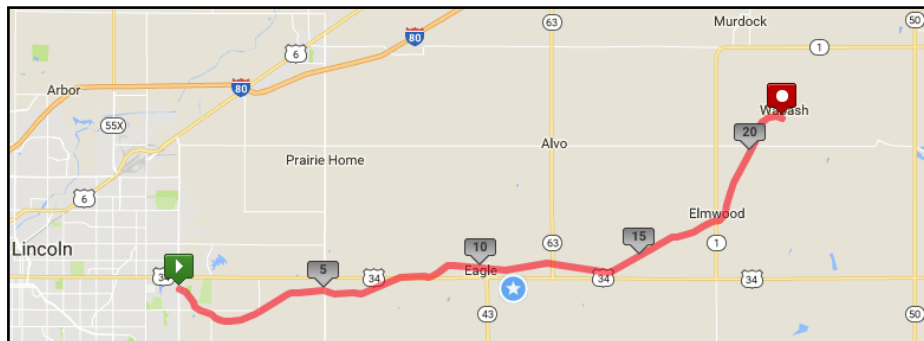
Maskenthine Lake State Recreation Area is located 10 miles east of Norfolk in the rolling hills of Stanton County. There are 740 land acres including a 100-acre lake. Along with boating, fishing and hiking, there is an arboretum established on the east side of the lake. Horses are allowed in the undeveloped areas around the lake.

Directions: From Stanton, go north on Ridge Road for 2.4 miles. Turn left on 839th Road and then turn left into the park. Managed by Lower Elkhorn NRD.

MoPac East Lincoln / Eagle / Elmwood / Wabash



The MoPac East provides an equestrian trail beginning at approximately 98th & A Streets in east Lincoln. There is a small parking lot at the trailhead. The trail continues alongside the multi-use trail through the towns of Walton, Eagle and Elmwood. While the improved trail stops in Wabash, there is an undeveloped trail continuing east for a mile or so before ending. The terrain is flat and kept mowed; much of it is a nicely shaded route. Follow the signs and stay on the horse trails. The trail is 21.67 miles from Lincoln to Wabash. Parking at Eagle is near the swimming pool in the center of town. You may park on the road near the park in Elmwood. Managed by the Nebraska' Natural Resource District. For more information, visit www.nrdnet.org/rec-area/mopac-east-trail



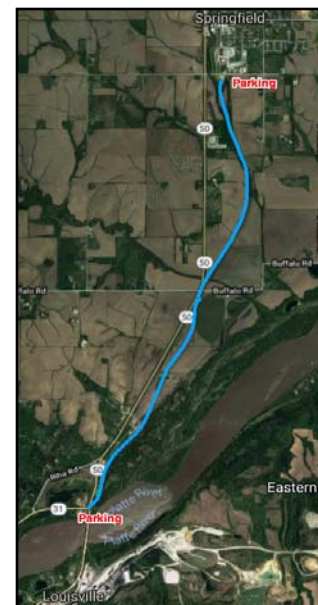
MoPac Trail Springfield / Louisville



The MoPac Trail offers a 5 mile ride from southern Springfield to the intersection of Hwys 31/50 north of Louisville. The trail follows a limestone hiking and biking trail along Hwy 50. There are a few metal-bottomed bridges along the way.

Directions: You will find parking east off of Hwy 50 and Pflug Road on the southern side of Springfield. On the Louisville side, parking is available on the south corner of Hwys 31/50.

Right: NHTC Trail Clearing on the MoPac



NP Dodge Park Omaha

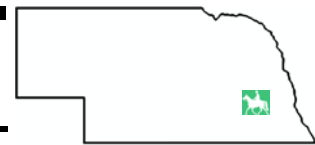


N.P. Dodge Park is 445 acres with two "double-wide" park boat ramps located on the Missouri River. There is a nice natural area around the inlet north of the marina for river fishing. A large pavilion and many picnic shelters are available in the park. Much of the park remains a natural, open area. A horse trail is available at the north edge of the park. Bike paths and walking trails are around the south edge of the park.

Directions: The park entrance is at 11005 John J Pershing Drive in Omaha.

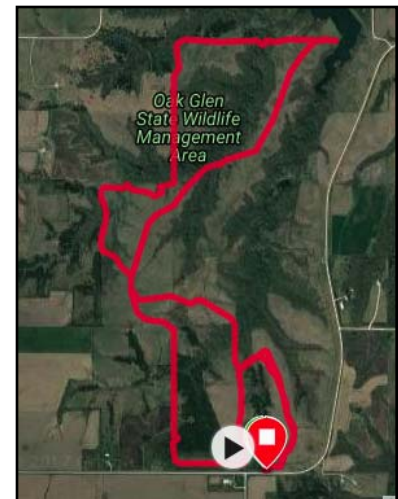


Oak Glen Garland

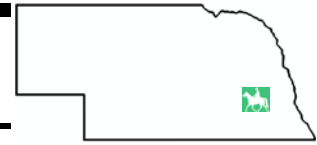


Located north of Garland, this 600-acre wildlife area provides open riding in the prairie and among the bur oaks. Follow the two-track or deer trails in the open prairie or down in the trees. Pay particular attention to hunting seasons.

Directions: Take 196th Road 1 mile north from Garland. Turn right and there is a small parking lot on the left. You can continue around the curve to the north and find another parking area to the left. Nebraska State Park permit required.

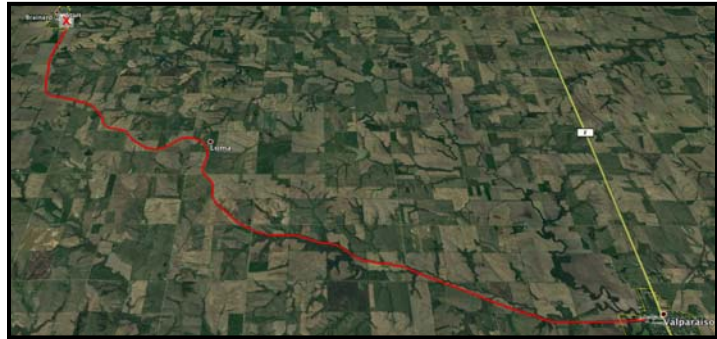


Oak Creek Trail Valparaiso / Loma / Brainard



The Oak Creek Trail with trailheads in Valparaiso, Loma and Brainard is a rails-to-trails project. The Nebraska Horse Trails Committee cleared and created the parallel horse trail in cooperation with Lower Platte South NRD. This multi-use trail follows the former railroad bed, in Saunders and Butler counties, connecting these three communities in the heart of the “Bohemian Alps”, just north of Lincoln. Traveling northwest is a gradual uphill climb with some small hills, a creek crossing and lots of bridge crossings. You’ll find native prairie, red sumac and of course, cropland. The trail from Valparaiso to Brainard is about 13 miles; Loma is at 7.5 miles and riders can go another 5.5 miles to the Brainard trailhead. This is a shared trail so be aware of bikers and joggers. Riders are asked not to ride on the limestone trail except where necessary and scoot any droppings off the bridges.

Directions: From Lincoln, go 14 miles north on Hwy 79. At the gas station in Valparaiso, turn west and go two blocks to the grain elevator. Parking lot is on your left. Park near the vault toilet in Loma. There is no parking lot in Brainard; park along the road at the trailhead.



The 1995 Patrick Swayze movie To Wong Foo was filmed in Loma. Riders can still see a faded mural depicting the fictional town of “Snyderville”.

W: www.nrdnet.org/rec-area/oak-creek-trail

Pawnee Lake Lincoln (Emerald)



Pawnee Lake State Recreation Area located northwest of Lincoln (north of Emerald) offers 2,500 acres of water, prairie and wooded areas. Shared use trails circle the lake through the state park and accompanying wildlife area. Beautiful ride to view fall colors. Lots of water fowl on the lake; sunrise and sunset views. The trails wind around the lake, through the trees and tall grass and along the shoreline. This popular lake is frequented by other recreational users so be prepared for picnickers, hikers, fisherman and swimmers. Stay on marked trails and be aware of hunting seasons.

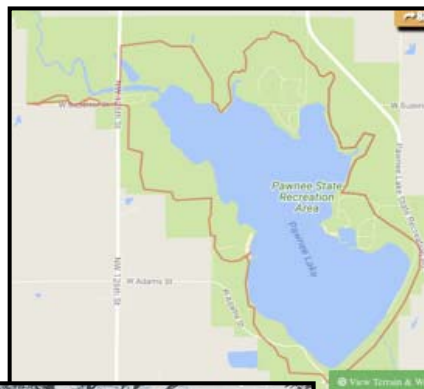
Horse camping is available only in the camping area east of NW 126th Street and W. Superior Street. Horses must be kept in furnished corrals (2 available). If full, portable fencing may be set up next to the corrals. Absolutely no horses in the campsites.



Miles of Trail	Terrain	Barefoot Friendly	Camping Sites	Water	Corrals	Amenities & Notes
9	Dirt Grass Flat	Yes	Concrete	Yes	Yes	Primitive camping on concrete pads. Water in campground. Vault toilets. Fire ring and picnic tables. Dump station in park.

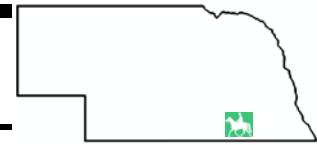
Directions: From Lincoln, take Hwy 6 west. Turn north on NW 126th Street and drive 3 miles until you get to W Superior Street. Horse camping is in the camping area to the east. Turn west for day use camping.

From Hwy 34, turn south on NW 126th Street. Drive 2 miles. Camping on the east side of the road. Turn west on W. Superior Street for day use parking.



Pawnee Lake SRA / 4500 NW 126th / Lincoln, NE 68524
P: 402.796.2362 / W: www.outdoornebraska.gov/pawnee/

Rock Creek Station Fairbury



Step back in time at Rock Creek State Historical Park located north of Endicott. A former Stage Coach and Pony Express station rich in cowboy history. Ride over the toll bridge and into the ranch where Wild Bill Hickok took out the McCanles Gang. Enjoy prairie hilltops, timber-studded creek bottoms and rugged ravines. Follow the ruts left by the wagons along the Oregon and California Trails. *From May 7 to October 22, ride the adjoining Rock Glen Wildlife Management Area and experience the red rock canyons. Rock Creek is a “can’t miss” for horse trail riders. Stop in the visitors center and visit the park’s museum.

Primitive horse camping is available with corrals, water hydrants and dispersed hitching posts, many of which were provided by the Nebraska Horse Trails Committee. First come, first served. Portable fencing is permitted. A new shower house is within walking distance of the horse camp.

Miles of Trail	Terrain	Barefoot Friendly	Camping Sites	Water	Corrals	Amenities & Notes
15*	Dirt Grass Hills	Yes ; some rock in canyons	Grass	Yes	Yes	Primitive camping only. Picnic tables & fire rings. Hitching posts, corrals. Vault toilet and nearby shower house. Dump station.

Note: GPS will route you on minimum maintenance dirt roads. Follow directions below.

Directions: From Hwy 136, turn south in Jansen at the sign. Drive 4+ miles to 710 Road. Turn left (east) and go 1.25 miles. Turn in on your right.

From Fairbury, take 711 Rd/PWF 5 miles east. Turn right on 574 Avenue & go 1 mile. Turn left (east) on 710 Rd and go 1.25 miles. Turn in on your right.

From Hwy 8, just east of Endicott go north on 573 Avenue about 3 miles. Turn right (east) on 710 Rd and go 1.25 miles. Turn in on your right.

Fees: Nebraska State Park permit required. Additional fees for camping. Contact park for information.



Rock Creek Station SHP / 57426 710 Road / Fairbury, NE 68352
P: 402.729.5777 / W: www.outdoornebraska.gov/rockcreekstation/



Left: Competitive Trail Ride at Rock Creek Station
Above: Riders on the toll bridge at Rock Creek Station

Pioneers Park Lincoln



Located off W. Van Dorn Street & S. Coddington Avenue in southwest Lincoln, Pioneers Park offers almost 700 acres of tall grass prairie and woodlands. Over the years, some of the horse trails have been lost to other recreational activities and currently (2018) the Nebraska Horse Trails Committee and other rider groups are working with park officials to restore some of the early trails or add to the trail system. This park is highly-used for all recreation so expect traffic. Contact City of Lincoln Parks & Rec. for information on parking and trails. Day ride only; no camping. No fees. Ph. 402.441.7847

Stagecoach Lake Hickman



Stagecoach Lake State Recreation Area has about 600 acres of land for dispersed riding. No marked trails or horse camping.

Directions: Stagecoach Lake is in southern Lancaster County, located just 1 mile south of Hickman off S. 68th Street and Panama Road.

Standing Bear Lake Omaha



Located in northwest Omaha, Standing Bear Lake, named after the Ponca tribe leader Chief Standing Bear, is about 400 acres of parkland. There are about 5 miles of shared trail and riders will encounter dog walkers, joggers, bicycle riders and other recreation along the trails.

Directions: Located at 6404 N. 132nd Street and it is recommended that trailers use the 132nd Street entrance to the park.

Turkey Creek Ranch Newcastle



Turkey Creek Ranch offers 16+ miles of groomed trails for you to explore the beauty of northeast Nebraska. Terrain ranges from scenic hilltop views of the Missouri River to peaceful shaded ravines for a quiet ride. The trails lined with hardwood trees are enjoyed in all seasons. Plenty of wildlife along the way. The perfect weekend get away or simply a nice day ride, Turkey Creek Ranch offers some of the most beautiful horse trails available. Also enjoy Turkey Creek's innovative obstacle course.

The campground provides electrical hook-ups and primitive camping. A covered picnic shelter is available for all guests to enjoy. Water, porta-potty and single shower house. Cabins are also available. Horses must be stabled in corrals at Turkey Creek. See management for most current map. Reservations recommended.

Miles of Trail	Terrain	Barefoot Friendly	Camping Sites	Water	Corrals	Amenities & Notes
16+	Dirt Grass Hills	Yes	Grass	Yes	Yes	Electrical sites. Picnic tables, fire rings, picnic shelter. Water, bathing area for horses. Obstacle course. Cabins.

Note: GPS will not take you to the final destination. Follow directions below.

Directions: From Newcastle, go 4.2 miles west to NE Spur 15N. Turn right & go 1.5 miles to 579 Avenue which will be on your left. Take 579 Avenue for 2.7 miles. Turn in on your right.

From South Dakota Hwy 50, after you cross Missouri River bridge into Nebraska, go about 1 mile and turn right on 579 Avenue. Take 579 Avenue for 2.7 miles. Turn in on your right.

Fees: Camping & day use. Contact Turkey Creek for



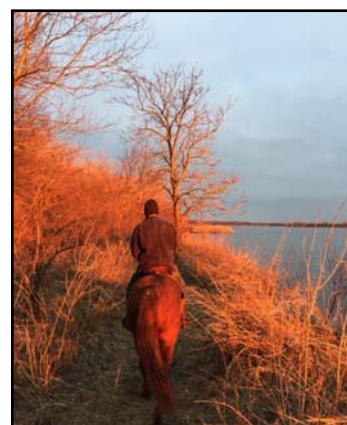
Turkey Creek Ranch / 58020 888 Road / Newcastle, NE 68757
P: 402.355.2614 / E: info@turkeycreekne.com / W: www.turkeycreekne.com/

Two Rivers Waterloo



Two Rivers State Recreation Area is located west of Omaha along the Platte and near the Elkhorn Rivers. There are many small lakes within this popular wooded park. Many unmarked bridle paths surround the camping areas and from February through August, enjoy the scenic wild-life management area with hidden trails around every turn. The sunsets over the Platte River should not be missed.

Horse camping is located west of the cabooses in the Whitetail Camp-ground. Primitive camping with 12 corrals, manure bunker and nearby hydrants were recently provided by the Nebraska Horse Trails Committee. Vault toilet in horse camp. Showers in other areas of the park. Concessions during peak seasons. Swimming beach, volleyball and trout fishing.

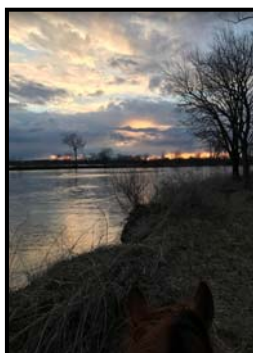


Miles of Trail	Terrain	Barefoot Friendly	Camping Sites	Water	Corrals	Amenities & Notes
10	Dirt Sand Flat	Yes	Grass	Yes	Yes	Primitive camping. Swimming beaches, paddle boats and fishing available in park. Water, fire rings, picnic tables and vault toilets. Dump station.

Directions: From Omaha, take Hwy 92 west to 264th Street. Turn south and go 1 mile. Turn west on F Street & drive 1 mile to park.

From I-80 take Gretna / Hwy 6 exit and go north about 6+ miles. Turn left on Q Street & drive 5.3 miles. Turn left on F Street and drive 1 mile to park.

Fees: Nebraska State Park permit required. Additional fees for camping. Contact park for information.



Two Rivers SRA / 27702 F Street / Waterloo, NE 68069
P: 402.359.5165 / W: www.outdoornebraska.gov/tworivers/

Wagon Train Hickman

Wagon Train Lake State Recreation Area south of Lincoln hosts about 750 acres on a 315-acre lake. Some trails and open riding. No horse camping.

Directions: Drive 2 miles east of Hickman on Hickman Road. Nebraska State Park permit required.



Walnut Creek Omaha (Papillion)

Walnut Creek Lake and Recreation Area near Papillion offers 450 acres of land around a 105-acre lake. Located south of Hwy 370 and west of 96th Street, this urban park offers fishing, biking and nature study.

Directions: 11601 S. 96th Street, Papillion. For information, call 402.597.2043.



Trail Clearings at Branched Oak

Wilderness Park Lincoln



Wilderness Park is to Lincoln what Central Park is to New York City. This 1,400 acre public conservancy located in southwest Lincoln features a network of walking, biking and horse trails throughout the wooded area. The largest park in Lincoln, it serves as the primary tributary to Salt Creek. There are many bridges to cross as well as going under some highways and streets. The trail is about 8 miles from trailhead to trailhead and is an “up there & back” ride. Horses are not allowed on the Jamaican Trail so please respect that ordinance.



Directions: Take the Homestead Expressway (Hwy 77) south. The 1st Street trailhead is located between Pioneers Blvd. & Old Cheney Road. The 14th Street trailhead is located between Pine Lake Road and Rokeby Road. Day ride only; no camping. No fees.



Wildwood Lake Agnew



Wildwood Lake offers almost 500 acres to explore, including virgin and native grass prairies. Follow the trail which will take you around the lake. Note at the northwest parking lot, the trail diverts to the gravel road. Ride the road around the corner and get back on the trail at the next parking lot. You will enjoy pretty sunset views and lots of wildflowers. Looking to the southeast, view the beautiful Carmelite Monastery. The trail is mostly mowed and there are some bridges along the route. Several parking lots; do not block in boat trailers. This park is hunted so be sure and respect hunting seasons.

Directions: Take Hwy 79 north from Lincoln 11.5 miles. Turn west on W. Ashland Road for 1/2 mile. Turn back south for 1/2 mile. Destination on your right. No fees or park permit. Managed by Lower Platte South NRD.



Resources & Credits

Archives of the Nebraska Horse Trails Committee

Horsetrailriders.com

Nebraska Game and Parks

Nebraska Resource District

Discovernwnbraska.com



Photos by Tammy Vasa, Kathy Newberg, Mike Anderson, Joni Martin, Joanne Zabawa, Brenda Orr, Mary Hanson and Jessa Karlberg



NHTC Board of Directors



Mike Anderson

Diane Beckham

Mary Hanson

Tanya Lynch

Kathy Newberg

Shari Parys

Vickie Sich

Sharron Ankersen

Pattianne Belitz

Gina Kollars

Rocky May

Richard Newberg

Sherry Reeble

Arlyce Thompson-Krug

Alice Auer

Dwight Hanson

Mary Larsen

Sue May

John Orr

Jamie Sich

Tammy Vasa



Coming each March

For All
Recreational
Horse
Enthusiasts!

The Horse Trail Riding Expo

This all horse event features trail riding clinics, presentations, educational opportunities, horse camping tips and some extreme trail competition. Shop 'til you drop at our specially selected vendors who cater to these horse riding activities. Don't miss the equine social event of the season!

Clinics & Presentations

**A Horse Trail
Extravaganza
under one Roof!**

Exhibits * Vendors * Tack * Horses * Fun *



The Horse Trail Riding Expo

The 2nd Weekend each March
Chance Ridge Event Center
506 Skyline Road
Elkhorn, Nebraska
Nehorsetrails.com



Like The Horse Trail Riding Expo on Facebook!



The Nebraska Horse Trails Committee, Inc.
P.O. Box 212, Blair, NE 68008
Nehorsetrails.com

Affix Postage

